

THE INFLUENCE OF PHOTOGRAPHY IN PAINTING

ROLLO Contemporary Art, 51 Cleveland Street, London W1T 4JH
3rd June – 10th July 2009

ROLLO Contemporary Art presents a group exhibition of international painters whose works display a relationship to the photographic medium.

The works by these artists remain inherently 'painterly'; displaying confident application of paint and visibly bold brushstrokes, yet in a variety of ways these paintings create a dialogue with photographic practice and place painting within a larger context of imagery.

The exhibition continues in ROLLO Contemporary Art's exhibition programme of curating thematic group shows to suggest themes in current art practice, tracing the influence of photography in contemporary painting.

Artists

Tiina Heiska (Finnish, lives and works in Finland)

Andrew Hollis (South African, lives and works in U.K.)

Antonio Santin (Spanish, lives and works in Madrid and Berlin)

Tiina Heiska



There is a cinematic and photographic sense to the paintings by Tiina Heiska, with a latent voyeurism inherent in her works - the viewer as much as the object is suggested in her paintings. Heiska's paintings suggest a moment caught in action, a snapshot of a scene, a figure unconscious of being imaged; scenarios more easily equated to a photographic encounter than a painting.

The girl who appears in Heiska's paintings is based on photographs the artist's takes of herself.

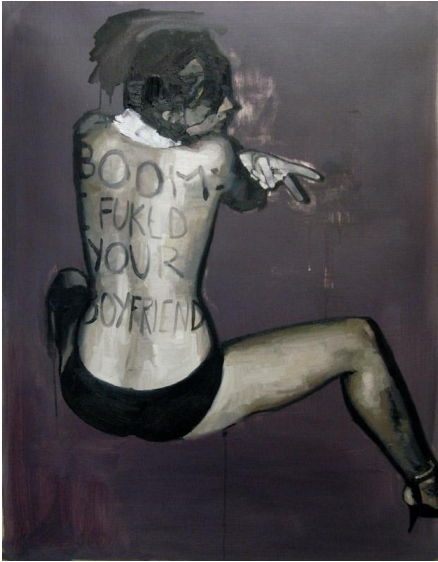
Heiska heightens the sense of the photographic when painting by making use of photographic means; artificial lights, focus and motion blur.

Heiska is interested in the dichotomy that exists when re-creating the speed captured in a photograph through the lengthy process of painting.

Though the figure in her work is herself, Heiska manages to manufacture a sense of distance from her self-portraiture by subjecting her imagery to this process of double detachment – from reality to photo to painting.

Heiska was nominated for the Sovereign European Painting Prize in 2008.

Andrew Hollis



The starting point of Hollis's works are photographic images, taken from magazines and newspapers. Hollis translates these into paint, creating images with bold brush-strokes, favouring shape over line. Hollis emphasises the materiality of paint in his work whilst nonetheless still consciously retaining the sense of a photograph, positing painting within a wider context of imagery. Hollis is deeply engaged with the relationship between photography and painting; the effect of the transition of an image from one media to another and the difference in the viewing a photographic image to a painting.

Hollis' latest body of art, created for ROLLO Contemporary Art's exhibition, investigates the figure as the site of culture; exploring the

figure as the receptor, mediator and communicator of culture.

Hollis graduated from Central St Martin's MA in Fine Art in 2008, he was selected as one of the top artists to watch in *ROLLO Emerge 2008* and has had 10 international solo shows; in South Africa, Europe and Central America.

Antonio Santin



Santin's larger than life paintings of women's faces seem reminiscent of cosmetic advertising campaigns, where attractive faces are exclusively focused upon and isolated against stark non-descript backgrounds.

The starting point of Santin's painting process is indeed to photograph models in his studio. However, when translating these photographs into paint, Santin disturbs his sugary sweet images by applying abstract gestures of paint over the surface of the photo-realist painted faces, obscuring the original image and immediately changing its intentions.

Santin's images are imbued with a provocative edge, a painterly violation of photographic intentions - whilst simultaneously suggesting a celebration of the freedom of paint, enlivening an image from the flatness and fixed, controlled nature of the photographic image.

In Santin's work, paint dominates over photography to suggest the artist has ultimate control to manipulate and revel in the freedom of making.

Antonio Santin lives and works in Madrid and Berlin, having had solo shows in Hamburg, Madrid, Zurich and Munich.

CONTACT: For further details about any of the artists works please contact Philippa Found, Gallery Director on philippa@rolloart.com +44 (0)207 580 0020.

Notes:

A press launch and private view will be held on 2nd June 2008 from 6.30 – 8.30 pm at ROLLO Contemporary Art, 51 Cleveland Street, London W1T 4JH

ROLLO Contemporary Art Gallery launched in 2005 with *The Writer*, the installation of a 30m high table and chair on Hampstead Heath, and fast established itself as a serious force in the art world.

ROLLO supports emerging artists through to the well-established, such as gallery artist Frank Bowling RA.

Based originally in Islington, the gallery moved temporarily to Albemarle Street W1 in 2007 before finding its permanent home in Fitzrovia, London's new art quarter, in January 2008. As well as holding seven exhibitions within the gallery space a year ROLLO continues to organise outside projects, aiming to bring art to innovative spaces to reach a wider audience and make art more accessible. In 2008 ROLLO organized three art projects in Selfridges department store with artist Claire Morgan. Currently ROLLO has an exhibition of Frank Bowling RA's work showing at Clifford Chance, London office in the 30th floor exhibition space and in 2010 ROLLO will be curating an exhibiting at New Hall, Cambridge.

Gallery Directors are Philippa Found and Simon Gillespie.

Philippa Found's area of interest is female art and the body in art. Philippa is curating a series of travelling exhibitions throughout 2010 surveying the body in contemporary female art-practice. The exhibitions will be shown at ROLLO Contemporary Art and New Hall exhibition space in Cambridge, home of New Hall Art Collection, the largest collection of female art in the UK, second in the world only to the National Museum of Women in the Arts Washington.

Simon Gillespie's background is in restoration and conservation of art, having run Simon Gillespie Studio for over 27 years. This has endowed Simon with an incredible knowledge of artistic techniques and leads him to seek out art of high technical standing. His knowledge and training also account for his ability to spot art that is durable. Simon has extensive experience in building private collections in both Europe and the US. In the late 90s Simon created Berger's collection of British art, culminating in the publication and exhibition of '*600 years of British Painting*' at Denver Art Museum, Colorado.

Future exhibitions scheduled at ROLLO are:

Old Master Reinterpreted 14th July – 28th August 2009, including Masaki Yada, Joanna Hill, Bryony Andersson

Frank Bowling RA: New Works solo show, 2nd September – 23rd September 2009.

The Body in Female Art: PART 1 26th September – 20th November 2009 travelling to New Hall, Cambridge, public exhibition space in January 2010.

Including Regina Jose Galindo, Jessica Lagunas, Lydia Marie Julien

ROLLO Emerge 2: Graduates of Summer 09 24th November – 22nd January 2010

Art and Fashion: 22nd January – 26th February 2010

The Body in Female Art: Part 2: 2nd March – 2nd April travelling to New Hall Cambridge,

10th April – 9th May, including Sarah Lederman, Tiina Heiska